



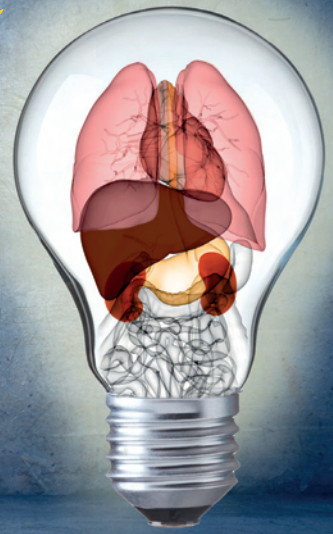
CLINICAL
TRANSPLANTATION
DAY

2015

27TH NOVEMBER 2015

REJECTION IN SOLID ORGAN TRANSPLANTATION

STARHOTELS DU PARC - PARMA, ITALY



With an unrestricted educational
grant by:



People and ideas for innovation in healthcare

Organised by:



a working group of ERA-EDTA



www.ctday.eu

CLINICAL TRANSPLANTATION DAY REJECTION IN SOLID ORGAN TRANSPLANTATION

8.00 REGISTRATION

8.45 *Opening Ceremony*

First Session

IMMUNOLOGY/PATHOLOGY OF REJECTION AND ITS PREVENTION

Chairs: R. Oberbauer (Vienna, Austria), J.M. Grinyó (Barcelona, Spain)

9.00/9.20 **T-cell biology in rejection**

K. Wood (Oxford, UK)

9.25/9.45 **B-cell biology in rejection**

M.R. Clatworthy (Cambridge, UK)

9.50/10.10 **Pathology of rejection**

M. Haas (Los Angeles, USA)

10.15/10.35 **Prevention is better than treatment:
current allocation strategies**

F.H.J. Claas (Leiden, The Netherlands)

10.40/11.00 **Do we have tools
for predicting rejection?**

O. Bestard (Barcelona, Spain)

11.05/11.35 COFFEE BREAK

Second Session

REJECTION TREATMENT AND REJECTION IN LIVER/HEART TRANSPLANT

Chairs: K. Budde (Berlin, Germany), L. Rostaing (Toulouse, France)

11.35/11.55 **Rejection in low-risk patients,
does it matter?**

D. Serón (Barcelona, Spain)

12.00/12.20 **Rejection in high-risk patients**

C. Lefaucheur (Paris, France)

12.25/12.45 **Treatment of rejection beyond steroids**

D. Glotz (Paris, France)

12.50/14.10 LUNCH BREAK

14.10/14.30 **Rejection in liver transplantation**

P. Burra (Padua, Italy)

14.35/14.55 **Rejection in heart transplantation**

A. Zuckermann (Vienna, Austria)

15.00/15.20 **What is the risk of overtreatment and
when to stop anti-rejection therapy?**

J.W. De Fijter (Leiden, The Netherlands)

15.25/15.55 COFFEE BREAK

FREE COMMUNICATION SESSION

Chairs: J. Pascual (Barcelona, Spain), U. Maggiore (Parma, Italy)

15.55/16.05 **Subclinical humoral rejection (SHR).
The challenge of treatment**

S. Sandrini (Brescia, Italy)

16.05/16.15 **Acute rejections after kidney transplantation
depend on donor factors and deceased
donor kidney associated risk assessed
by the Kidney Donor Profile Index (KDPI)**

O. Staack (Berlin, Germany)

16.15/16.25 **Factors associated with acute rejections
in kidney transplant recipients: time
for HLA-DRmatching in elderly recipients?**

F. Halleck (Berlin, Germany)

16.25/16.45 CONCLUDING REMARKS